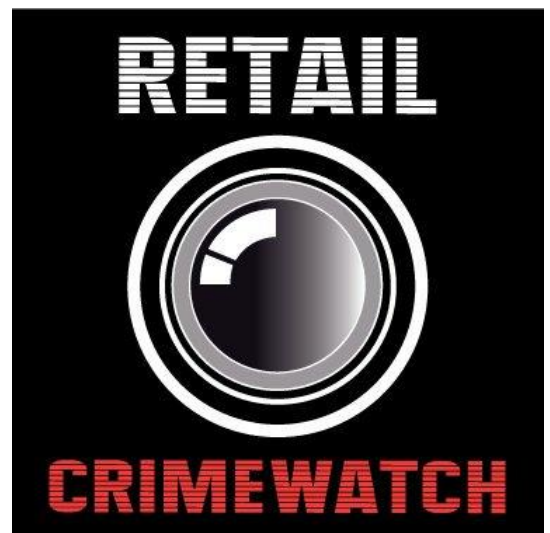


FREQUENTLY ASKED QUESTIONS



Frequently Asked Questions (FAQ)

Q. What does an exclusion order mean to me?

A. An exclusion order means that you are excluded from any premises displaying the Retail Crimewatch logo while this exclusion order is in force. If you do enter the premises, you will be treated as a trespasser. If you steal or attempt to steal, you will be liable to prosecution for the offence of burglary with a maximum prison sentence of 14 years.

Q. How long is an exclusion order in place?

A. An exclusion order is valid for a minimum of 12 months from the date it was issued. If an offender is caught reoffending within the 12 month period, their image will remain on the system for an additional 12 months.

Q. What stores am I excluded from?

A. If you are issued an exclusion order, you will be excluded from all stores who are part of the Retail Crimewatch scheme. All stores who are part of the scheme will be easily identified by the Retail Crimewatch logo which will be clearly displayed on their entrance/exit points to the store.

Q. While my exclusion order is active, are there any stores I can enter for essential goods?

A. If have been issued an exclusion order and wish to enter a RCW member store to purchase essential items, you will be required to approach a security guard or staff member on entry to identify yourself and explain you have currently got an active exclusion order. If you fail to identify yourself at first point of entry the store will assume you are not there for legitimate purposes and may prosecute. The store remains the right to

refuse entry or may request a staff member accompany you whilst you remain on their premises.

Q. Can I appeal an exclusion order that's been issued to me?

A. You have the right to appeal any incidence when an exclusion order is issued against you. Please submit your appeal via email or in writing to:

rcw@belfastcentre.com

**Belfast City Centre Management,
Sinclair House,
95 – 101 Royal Ave,
Belfast,
BT1 1FE**